



CRANEX LIMITED



AN ISO 9001:2008 CERTIFIED COMPANY



Regd. Off. : 9, D.D.A. Market, Katwaria Sarai, Opposite Qutab Hotel, New Delhi-110016 **Gram :** 'MOBICRANE'

Works : 57/1, Site-IV, Industrial Area, Sahibabad-201 010, Distt. Ghaziabad (U.P.) **Ph.:** 0120 - 3240427, 4167628

Fax : 91-120-4167630 **Website :** www.cranexltd.com **Email :** cranex1@yahoo.com, info@cranexltd.com

We manufacture Overhead EOT Crane which is fabricated using optimum quality raw material and components like MS Sheets, MS angles, I beam, motors, brakes. Our range is designed in such way that can bear loads ranging up to 300 tons. These are extensively used in foundry, machine shop, engineering industry. We also offer customization on our range as per the specification of clients.

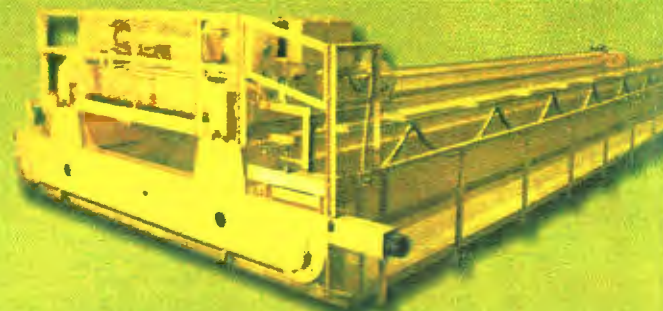
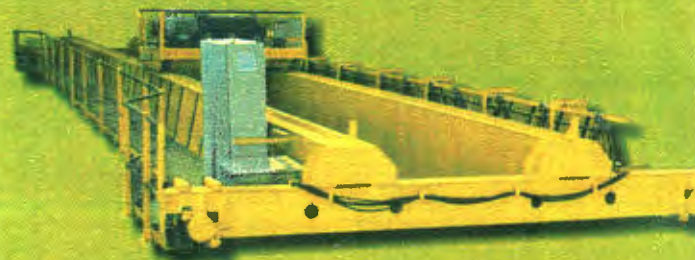
Some of the unique features of Overhead EOT Cranes include:

- High performance
- Durable
- Sturdy
- Easy maintenance
- Corrosion resistance

Our array of EOT Cranes/ SG EOT Cranes/ DG EOT Cranes is developed using finest quality raw material and components such as MS Sheets, MS angles, I beam, motors, brakes. These are ideal for power house cranes where these cranes are used for maintenance. Our high performance gamut requires low maintenance and can be tailored as per the demand of clients.

Following are the unique attributes of EOT cranes :

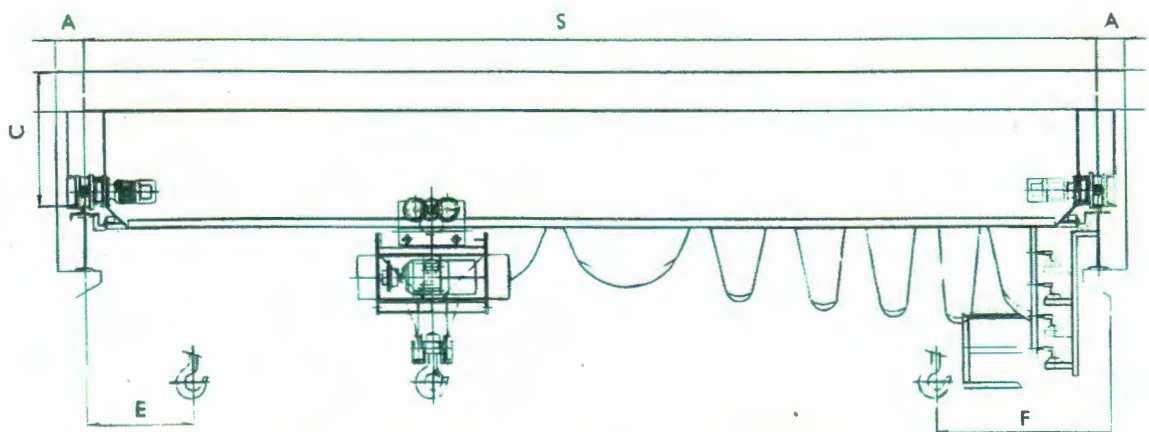
- Optimum design of the structure avoiding dead weight and reducing the cost of the equipment.
- Very much suitable for power house cranes where these cranes are used for maintenance.
- Economical Design by providing manual long and cross travel facility with a provision for using either an electric hoist or a motorized chain pulley block.
- Low head room which in turn reduces the cost of the shed/building.
- Customized design to match the budget of the customer.
- Highly Competitive Prices.



TECHNICAL PARAMETER FOR SINGLE GIRDER E.O.T. CRANES

| S.W.L. (M.T.) | Span (mtrs.) 'S' | Head Room (mm) 'C' | Wheel Base (mm) | Hook Approach (mm) E/F | End Clearance (mm) A | Wheel Load Per Wheel (Approx) |
|------------------|------------------------|--------------------------|--------------------|---------------------------------|-------------------------------|--|
| 1 | 5 | 750 | 1800 | 700 | 250 | 0.9 |
| | 10 | 850 | 2400 | 700 | 250 | 1.02 |
| | 15 | 900 | 2800 | 700 | 250 | 1.27 |
| 2 | 5 | 850 | 2000 | 700 | 270 | 1.6 |
| | 10 | 950 | 2400 | 700 | 270 | 1.7 |
| | 15 | 1050 | 2800 | 700 | 270 | 1.9 |
| | 20 | 1200 | 3600 | 700 | 270 | 2.3 |
| 3 | 5 | 850 | 1900 | 800 | 275 | 2.07 |
| | 10 | 950 | 2400 | 800 | 275 | 2.2 |
| | 15 | 1100 | 2800 | 800 | 275 | 2.6 |
| | 20 | 1300 | 3600 | 800 | 275 | 3.2 |
| 5 | 10 | 1000 | 2400 | 900 | 275 | 3.5 |
| | 15 | 1250 | 2800 | 900 | 275 | 4 |
| | 20 | 1350 | 3600 | 900 | 275 | 4.4 |
| 7.5 | 10 | 1100 | 2400 | 950 | 300 | 5.02 |
| | 15 | 1300 | 2800 | 950 | 300 | 5.5 |
| | 20 | 1500 | 3600 | 950 | 300 | 6.02 |
| 10 | 10 | 1200 | 2400 | 1000 | 300 | 6.5 |
| | 15 | 1400 | 2800 | 1000 | 300 | 7.1 |
| | 20 | 1550 | 3600 | 1000 | 300 | 7.6 |
| 20 | 10 | 1250 | 2500 | 1000 | 300 | 9.4 |
| | 15 | 1550 | 3000 | 1000 | 300 | 10.15 |
| | 20 | 1600 | 4000 | 1000 | 300 | 10.7 |

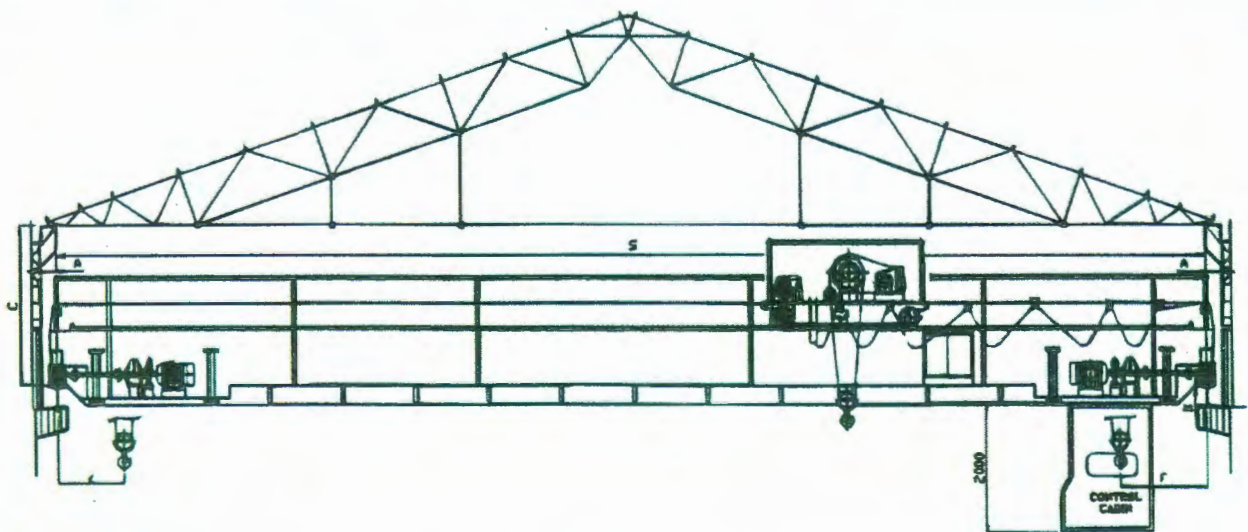
NOTE : 1. Above specifications are for Class II Medium Duty Cranes.
 2. Above dimensions are for Cranes having 6 Mtr. Lift. There may be minor deviations in dimensions for higher height of lift.
 3. 'Venus' reserve the right to effect any designs or dimensional change without Notice.



TECHNICAL PARAMETER FOR DOUBLE GIRDER E.O.T. CRANES

| S.W.L. (M.T.) | Span (mtrs.) 'S' | Head Room (mm) 'C' | End Clearance (mm) 'A' | Hook Approaches | | Wheel Base (mm) 'W' | Total Weight in tonnes (Approx.) | Wheel Load (Approx) (MT) |
|------------------|------------------------|--------------------------|------------------------------|-----------------|-------------|---------------------------|-------------------------------------|--------------------------------|
| | | | | (mm) 'E' | (mm) 'F' | | | |
| 5 | 10 | 1700 | 260 | 950 | 850 | 3600 | 10 | 6.2 |
| | 15 | 1700 | 260 | 950 | 850 | 3800 | 11 | 6.8 |
| | 20 | 1800 | 260 | 950 | 850 | 4000 | 14 | 8 |
| 7.5 | 10 | 1800 | 260 | 1000 | 900 | 3600 | 12 | 8.5 |
| | 15 | 1800 | 260 | 1000 | 900 | 3800 | 15 | 9.5 |
| | 20 | 1900 | 260 | 1000 | 900 | 4000 | 17 | 10 |
| 10 | 10 | 1900 | 260 | 1100 | 1000 | 3600 | 14 | 10 |
| | 15 | 1900 | 260 | 1100 | 1000 | 3800 | 15 | 11 |
| | 20 | 2100 | 280 | 1100 | 1000 | 4000 | 20 | 12 |
| 15 | 15 | 2400 | 280 | 1100 | 1000 | 3800 | 22 | 16 |
| | 20 | 2600 | 280 | 1100 | 1000 | 4200 | 25 | 17 |
| 20 | 15 | 2500 | 320 | 1200 | 1000 | 4000 | 24 | 19 |
| | 20 | 2700 | 320 | 1200 | 1000 | 4200 | 28 | 20 |
| 25 | 15 | 2700 | 320 | 1250 | 1100 | 4200 | 25 | 22 |
| | 20 | 3000 | 320 | 1250 | 1100 | 4400 | 30 | 23 |
| 30 | 15 | 2800 | 320 | 1300 | 1100 | 4400 | 30 | 26 |
| | 20 | 3000 | 320 | 1300 | 1100 | 4600 | 36 | 28 |
| 40 | 15 | 3200 | 330 | 1400 | 1200 | 4600 | 35 | 32 |
| | 20 | 3500 | 330 | 1400 | 1200 | 4800 | 40 | 34 |
| 50 | 15 | 4000 | 360 | 1500 | 1250 | 4800 | 42 | 37 |
| | 20 | 4500 | 360 | 1500 | 1250 | 5000 | 48 | 39 |
| 60 | 15 | 4200 | 425 | 1700 | 1350 | 5800 | 62 | 50 |
| | 20 | 4700 | 425 | 1700 | 1350 | 6000 | 72 | 52 |

- NOTE :
1. Above specifications are for Class II Medium Duty Cranes.
 2. Above dimensions are for Cranes having 6 Mtr. Lift. There may be minor deviations in dimensions for higher height of lift.
 3. 'Venus' reserve the right to effect any designs or dimensional change without Notice.



Single Girder Cranes

STANDARD FEATURES:-

DESIGN:

Compact dimensions, low weight, easy to operate and easy to maintain.

MOTORS:

Motors will be Crane duty motors, squirrel cage induction motors for hoists and cranes also slipring induction motors will be provided for heavy duty cranes as per the applications.

GEAR BOXES:

Precision flat helical / spur gear units in light alloy housings with case-hardened gears, high-grade surface treatment and permanent oil /grease lubrication.

BRAKES:

Single / Dual-disc electromagnetic DC brakes featuring automatic braking on power failure.

LIMIT SWITCHES:

To prevent over hoisting & over lowering of hook.

PUSH BUTTON STATIONS:

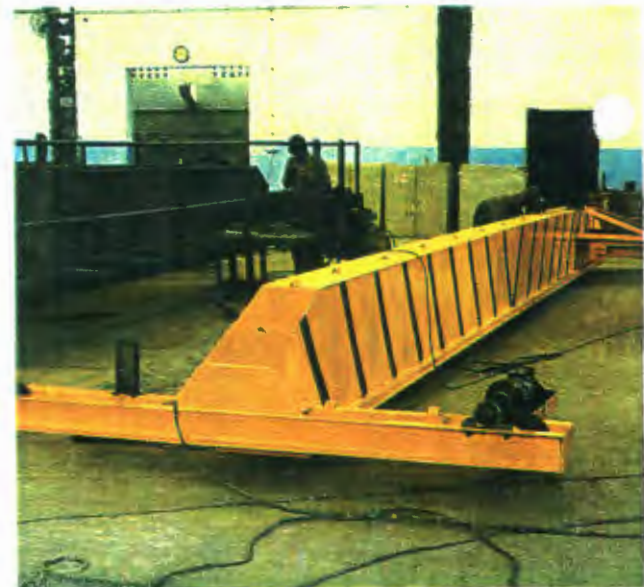
Extra light, handy, easy to operate, aluminum, fabricated from extruded section.

SOFT STARTS:

Electric / Electronic soft start modules electrically coupled to the long travel drives to achieve jerk free, cushioned & smooth starts.

MAINTENANCE PLATFORM WITH HAND RAILING:

Easy, simple & safe maintenance of the Crane extended partially or totally along the girder.



Double Girder Cranes

We are a well established manufacturer and exporter of EOT cranes with double girders, that find application for the purpose of lifting & transporting the loads over 10 T and for span of more than 25 m. Comprising of 2 torsion-free box girders, these EOT cranes such as double girder eot cranes, traveling eot cranes, material handling eot cranes etc., are compatible, when heavy loads and wide spans are required. These double girders EOT cranes are offered by us in the load capacities of up to 100 T and with spans up to 50 M.

- Capacity : 0.5 Ton to 100 Ton
- Span : 3 Mtrs. To 30 Mtrs.
- Lift : 0.5 Mtrs. To 35 Mtrs.

